



RESTORICA

Newsletter for the Lower Columbia Preservation Society

OLD HOUSE KITCHENS TOUR - COMING RIGHT UP!

Wednesday, September 23rd @ 6:30 p.m.

Let's celebrate the Fall Equinox together by intimately viewing two wonderful original Astoria old house kitchens. We'll begin at the 1896 Vernacular home of Donna Quinn, 1684 Franklin Street (formerly known as Wall Street when the river shore was close by). From here we can carpool to the Smith Point 1915 Craftsman home of Sue Cody, 69 Dresden Avenue, where parking is very limited.

We are fortunate that both Donna and Sue chose to appreciate their historic kitchens and managed to fit in modern refrigerators without remodeling! LCPS members have the unique opportunity to imagine the food preparation experience at the turn of the last century.

For more information please call Pam Chestnut @ 503 325-3245.

THE SHELBURNE INN, SEAVIEW, WASHINGTON

Saturday, October 17, 11:00am

David Campiche and Laurie Anderson will host the Lower Columbia Preservation Society at their beautifully restored inn. The property has 15 rooms with attached bathrooms, a large lobby, formal dining room and restaurant, and a casual brew pub on the premises.

The original hotel was built in 1896 and named after a grand hotel in Dublin. In 1911 a team of horses was employed to move the hotel across the street and join it to another large building at the present location. Hotel guests traveled by Columbia River steamer in the early days and took the "Clamshell Railroad" to the Shelburne which had its own platform and railroad stop.

Four major phases of refurbishing and new construction have been completed at the inn. In 1983, the large porch which surrounded the building was enclosed and made room for an expanded dining area. The inn has several Art Nouveau stained glass windows which were salvaged from a soon-to-be-razed church in Morecambe, England. For more information call Pam Chestnut at 503-325-3245.

Let the restoration begin!

By Pam Chestnut

Did you hear the collective sigh of relief from Astorians when news came that Greg Newenhof had acquired the Flavel house at 15th & Franklin? Hip hip hooray! In 1980 Mount St. Helens blew her top as the house was being prepped for paint. With much wood siding and many window frames bared to the elements, the Flavels chose this time to mostly abandon their home. Not long ago Astoria's new derelict building ordinance allowed the city to stabilize the house, installing plywood over windows and tarps over the roof in an effort to prevent human and water intrusion. In a devoted and diligent manner Greg is restoring the home with the help of local crafts persons, and he intends to make the 1901 4644 sq. ft. Colonial Revival his home. Greg has carefully sorted knee-deep memorabilia in the full attic, taking appropriate boxfuls to the Clatsop County Historical Society. He is gathering as many missing house parts as he can locate and will recreate the rest, including about 14 exterior balusters for the front exterior porch. With its excellent construction of old-growth tight-grain lumber, the house is in remarkably good shape considering the lack of paint, vandals and vagrants for 35 years. The poor neglected cedar window sashes are weathered but still sturdy. The summer

wood is a little worn but the grain is so very narrow and the winter wood so hard that I'm sure they'll endure another century or two if given the chance. One by one, plywood is being removed from the 'eyes' of the house as Greg completes another restored window installation, providing light and air to the soon-to-be-beautiful-again interior. The home is beautifully proportioned with lovely entry, elegant stairway on the left, music room ahead, living room on the whole north side, large dining room in the southeast corner with a handy butler's pantry connecting the efficient small original kitchen in the southwest corner, and back hall with a narrow back stairway to the second floor and attic servants' quarters. The main stairway needs stabilizing; plaster seems sound; floors, trim and doors are mostly intact and in need of refinishing; and I wouldn't be surprised if Greg replaces the antique peeling wallpaper. The whole-house basement is full of old stuff, dumbwaiter, mechanical devices and possibilities. Greg is surprised by the gratitude of our community and not used to the attention he has drawn. I'll add one more giant collective thank you from the historic preservation community.

Four new board members for Lower Columbia Preservation Society

The Lower Columbia Preservation Society membership elected four new members to its board at the May 9th Annual Meeting. They are Sarah Jane Bardy, Mike Green, Rachel Jensen, and Serena Schlosser.

Sarah Jane Bardy was born in New Jersey and has been an Astoria resident since 2007. Sarah Jane owns and operate Eleventh Street Barber in downtown Astoria. Drawn to Astoria for its high concentration of historic homes set on the hillside, Sarah Jane knew right away she wanted to be involved in preserving the region's historic structures. She is currently restoring a 1905 multi-family home near Clatsop Community College. She attended Architecture school at Portland State University and holds a certificate in Historic Preservation.

Mike Green has been an Oregon resident since 1952. He is a retired engineer and a Astoria homeowner. He has been a LCPS member since 2007. He is also docent at the Columbia River Maritime Museum. He enjoys home design, construction, and remodeling projects.

Rachel Jensen is a fourth-generation Astorian with strong ties to the community. She is a real estate agent, artist, and historic preservation consultant. She graduated from Marlboro College in Vermont with a B.A. in American Studies and Visual Arts. She then earned her M.A. from Savannah College of Art & Design in Historic Preservation. Beginning with an interest in the conservation of art, she studied preservation science, architectural history and cultural resource law. Her recent preservation projects include: a survey of Astoria's historic neighborhood grocery stores, research into the history of the Bornstein building at the foot of 5th Street; and participating in the inventory of properties within the Uppertown-Adair Historic District. Rachel and her partner, Nick, own four historic homes in Astoria, one Standard Poodle and two gorgeous ducks.

Serena Schlosser lives in her great-great-grandparent's house in Chinook, WA, which she is working to restore with her husband. She received her AAS degree in Historic Preservation from Clatsop Community College, completing her capstone project on the Reconstruction of the Brune Homestead (located in Columbia Hill State Park, ca. 1882). Serena has also completed the coursework for a MS in Historic Preservation from the University of Oregon. She completed the National Register of Historic Places Nomination and HAER documentation for Astoria Marine Construction Company. Currently, she is working on documenting (and hopefully preserving) a horse-seining shed located in Chinook.

From the Board

During the Spring and Summer this year, three of the four officers resigned their roles as officers, two also resigning from the board. The board decided to schedule an extra meeting, on August 25, to take stock and to clarify and assign roles and responsibilities.

At the extra meeting on August 25, the following positions were filled, on an interim trial basis, for four months, through the end of the calendar year.

President - Ann Gyde
Vice President, Treasurer - David Wigutoff
Secretary - Pam Chestnut

Coordinators of Mission Specific Activities

Programs - Patricia Roberts
Endowment Programs - Serena Schlosser
Advocacy - Doug Thompson (voted in as a
new board member)
Francis Apartment Building - Mike Green

Coordinators of Support Activities

Membership - Rachel Jensen
Internet Presence - Sarah Jane Bardy

Coordinator positions not filled.

Publications
Publicity

The Board is seeking volunteers for the two unfilled positions. Both positions would be filled on an interim trial basis, to see how they work for the volunteer and the organization. Both positions come with extensive ongoing guidance from experienced board members. The coordinators are encouraged to enlist others to help with the duties. The volunteer should be able to commit up to 10 hours per month. The coordinators are encouraged to be creative and make the roles their own. If the interim trial works out, the volunteer could become a board member.

The coordinator of publicity contacts, as needed, local newspapers and radio stations with notice of upcoming LCPS events, press releases, and articles about upcoming or past LCPS events. The coordinator also keeps alert for and makes use of other methods of publicizing LCPS.

The primary responsibility of **the coordinator of publications** is the Restoria, the LCPS newsletter. The coordinator is responsible for all aspects of the Restoria, including getting articles, proofreading, formatting, and mailing. Traditionally these tasks have not been done by only one person. The coordinator of publications is encouraged to recruit people to help. The coordinator is also responsible for some small "books" which we distribute to local attractions, where they are sold. The coordinator is encouraged to be creative about the possibility of publishing pamphlets and such.

The board is also recruiting for the position of **board secretary in training**. Beyond taking minutes at board meetings the secretary is responsible for the records of LCPS. The records of LCPS currently need attention. There are records to organize and to make more usable. This role is perfect for a person who likes to organize.

We urge you to volunteer for one of these creative, rewarding, and community enhancing roles. To express your interest, please contact Anne Gyde, interim president, by email, anngyde@gmail.com.

More from the Board - Endowment Projects

LCPS now has money in the endowment fund sufficient to carry out some projects. LCPS has never been able to do this before. The board is soliciting ideas for what kind of projects to do. What do you think?

The only guideline for a suggestion for an endowment project is that it supports the mission of the LCPS.

Be creative. Feel free to suggest ideas no matter how off the wall or out of the box. No need for the ideas to be polished with all of the details worked out. Email your suggestions, brainstorm, ideas for projects to be carried out with endowment funds to the coordinator of endowment projects, Serena Schlosser, sorwick@gmail.com.

The Francis Apartments

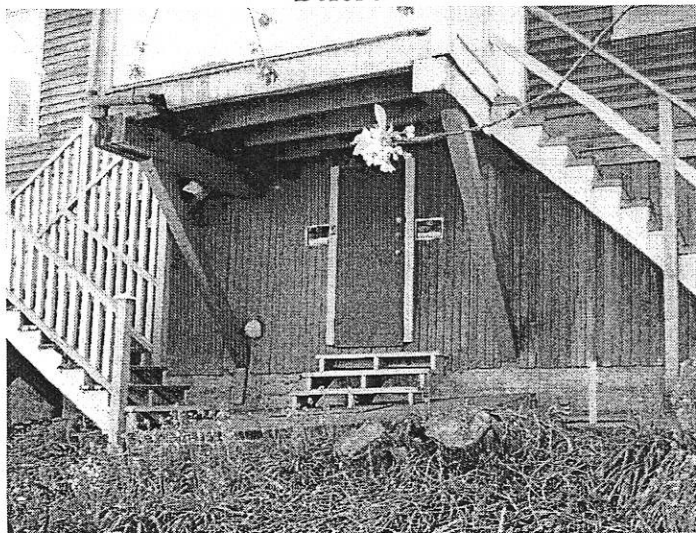
Photos and article by Mike Green

One of the buildings LCPS inherited from the Stramiello estate is the Francis Apartments at 1030 Franklin St in Astoria. At some time in the past a two-story stairwell tower was added to the rear of the building for added entry and exit.

Structural deficiencies were noted in the methods used to support this addition and LCPS was required to hire a structural engineer to design a remedy for this substandard condition. This structural work needed to be completed before renovation could begin on the two upper apartments.

Permits were obtained after Andy Stricker was hired to do the engineering design and Ray Prom did the concrete and structural work. All work passed inspection on the first time around. Total cost for the project was just under \$9000.

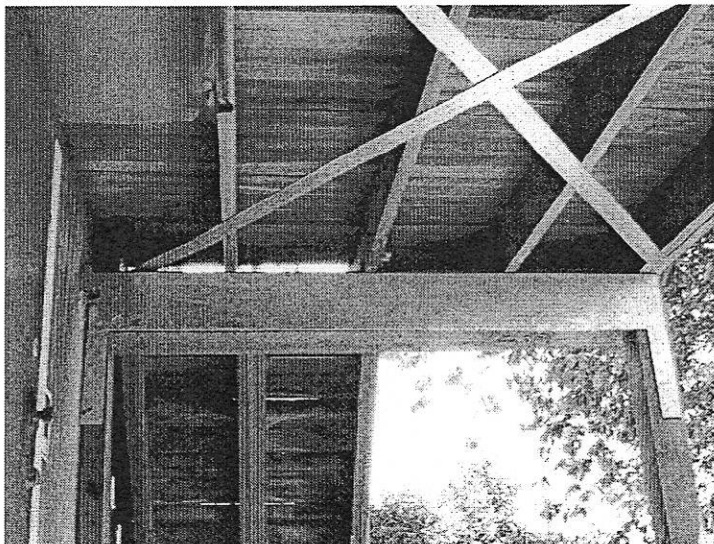
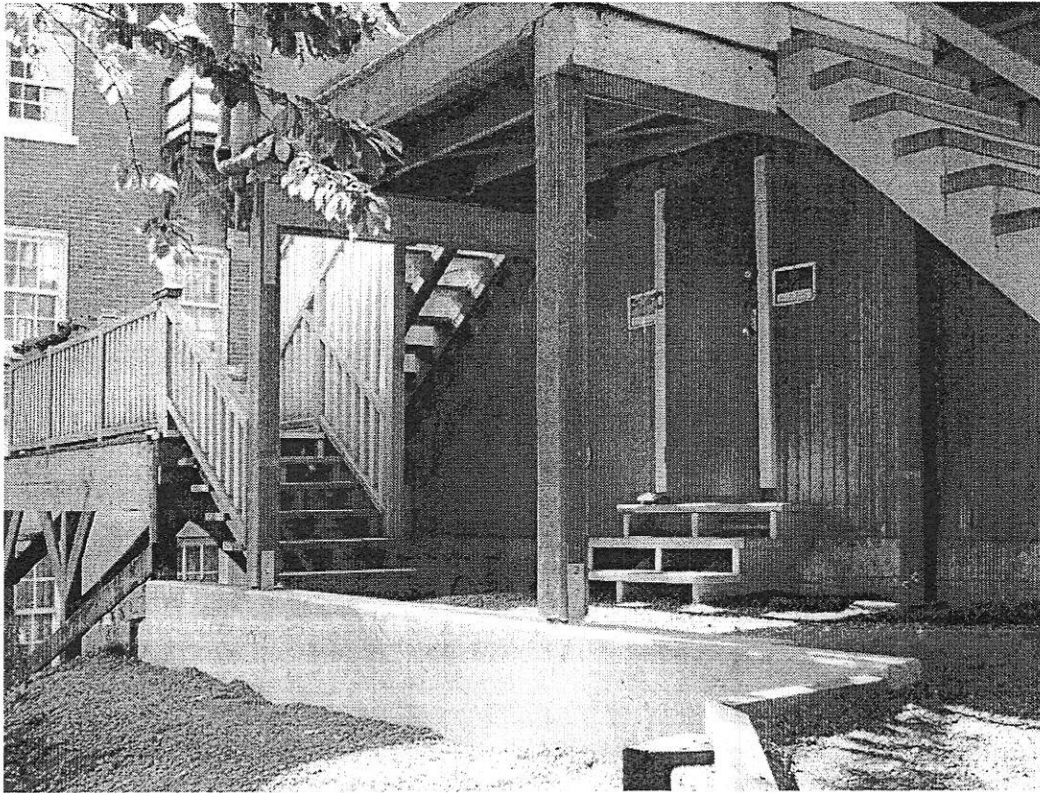
Before



This photo shows the stairwell tower before work began. The two Douglas Fir 45 degree braces were helping to support the structure used for entrance and exit from the rear of the apartment building. They were toe-nailed in place with huge spikes but were causing deflection in the foundation wall due to the load of this addition.

After

The 6x6 pressure-treated posts were installed prior to removing the 45-degree supports. The concrete footing shown is like an iceberg, most of it is below grade. Over 3 yards of concrete and several hundred pounds of rebar were used. Access to the jobsite is very limited. The apartment owners next door allowed us to use their parking lot for staging. Getting a track hoe into this small space was tricky.



Detail

Galvanized steel plates $\frac{1}{2}$ " thick were installed on each beam with 48 special structural screws 3 and $3\frac{1}{2}$ " long. The diagonal braces are also made of steel and will stabilize the floor joists by providing triangulation between the decking and the joists.

LOWER COLUMBIA
PRESERVATION
S.O.C.I.E.T.Y

PO Box 1334
Astoria, OR
97103

Return Service
Requested

PRSR AUTO
FIRST-CLASS

US POSTAGE \$00.39¹
SEP 14 2015
ZIP 97103
0801 1052811

Rachel Jensen
1445 Lexington Ave.
Astoria, OR 97103

103480 HMGWN5B 97103



LCPS MEMBERSHIP APPLICATION

NAME _____
ADDRESS _____
CITY _____ STATE _____ ZIP _____
PHONE _____
EMAIL* _____

Annual Dues:

_____ \$15 Individual
_____ \$25 Family
_____ \$50 Business
_____ \$100 Supporter

Please indicate which areas you would be able to assist the organization as a volunteer:

_____ Advocacy	_____ Newsletter
_____ Education	_____ Planning
_____ Grant Writing	_____ Publicity
_____ Membership	_____ Other _____

*LCPS will not share or sell members' email addresses

Lower Columbia Preservation Society
Board of Directors

Anne Gyde, Interim President
David Wigutoff, Interim V.P., Treasurer
Pam Chestnut, Interim Secretary
Sarah Jane Bardy
Mark Brown
Richard Foster
Mike Green
Debbie Halliburton
Rachel Jensen
Patricia Roberts
Serena Schlosser
Doug Thompson

Restoria Coordinator, vacant

LCPS Office:
1030 Franklin Ave.
Hours: pending
Website: www.lcpsweb.org

Submissions to Newsletter
Articles, Kudos, For Sale Notices,
Restoria@lcpweb.org